

GWST-CCSK Countersunk Closed End Threaded Insert

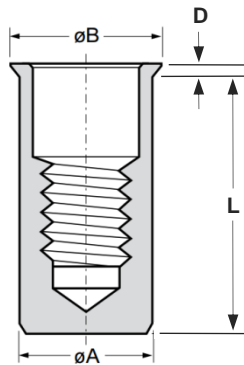
Steel · Countersunk · Round · Closed end
M4 - M10

Features

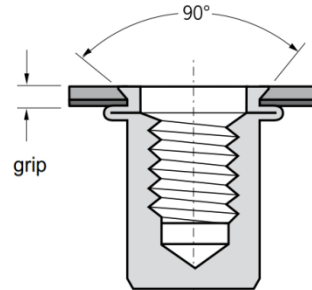
- Designed to provide load bearing threads in thin sheet materials
- Countersunk head flush installation and clamp up
- Closed end prevents the ingress of dirt and fluids into thread and electrical circuits

Material

- Steel, zinc plated



Before Placement



After Placement

Part No.	Thread Size	Grip Range		Hole Size	ϕA	ϕB	D	L
		min.	max.					
GWST-CCSKM4-1735	M4	1.7	3.5	6.0	6.0	9.0	1.5	15.0
GWST-CCSKM4-3550		3.5	5.0					17.0
GWST-CCSKM5-1740	M5	1.7	4.0	7.0	7.0	10.0	1.5	18.0
GWST-CCSKM5-4065		4.0	6.5					20.5
GWST-CCSKM6-1745	M6	1.7	4.5	9.0	9.0	12.0	1.5	22.0
GWST-CCSKM6-4565		4.5	6.5					24.0
GWST-CCSKM8-1745	M8	1.7	4.5	11.0	11.0	14.0	1.5	25.0
GWST-CCSKM8-4565		4.5	6.5					28.0
GWST-CCSKM10-1745	M10	1.7	4.5	12.5	12.4	15.4	1.5	29.5

Thread Size	Max. torque	Pull-out	Torque-to-turn	Shear strength
	Nm max.	Kn	Nm	kN
M4	> ~7.5	> ~10.8	~2.7	~2.6
M5	> ~10.0	> ~12.0	~4.7	~3.5
M6	> ~19.0	> ~21.0	~7.0	~5.0
M8	> ~50.0	> ~33.0	~13.0	~6.0
M10	> ~70.0	> ~40.0	~15.0	~8.0